



2020-2021 Student Code of Conduct



Students Rise. We All Rise.

What is the Code of Student Conduct?



- Student Code of Conduct (“Code”), ensures that every student in every school will be provided with a safe and secure environment in which to pursue the excellent educational opportunities available.
- Code governs student behavior at all district schools/programs, including career technical and vocational schools, alternative schools, and self-governing schools.
- The jurisdiction of the Code covers infractions that occur on school grounds, on school buses or in other school vehicles, during school-sponsored field trips, when connected with school-related events and activities and when students are in route to or from school.

Students' Rights



The right to due process



The right to be taught by effective teachers.



The right to a socially, emotionally, and physically safe and positive school climate.



The right to a free public-school education, equitable academic resources, and inclusive teaching and learning environments in all classrooms.



The right to be treated with respect and dignity by the school community.



The right to participate in decisions that affect their education.



The right to positive school disciplinary policies and practices.

Students' Responsibility



Respond in a timely manner to communications from school.

Show respect for school property and respect the property of others.

Be truthful about and accountable for your actions. Make an effort to correct and improve unsafe behavior with the support of teachers and staff.

Behave in a manner that contributes to a safe learning environment and which supports the rights or others to learn.

Meet the standards of behavior in the Code of Conduct and abide by it.

Abide by and follow other school rules, regulations, and policies.

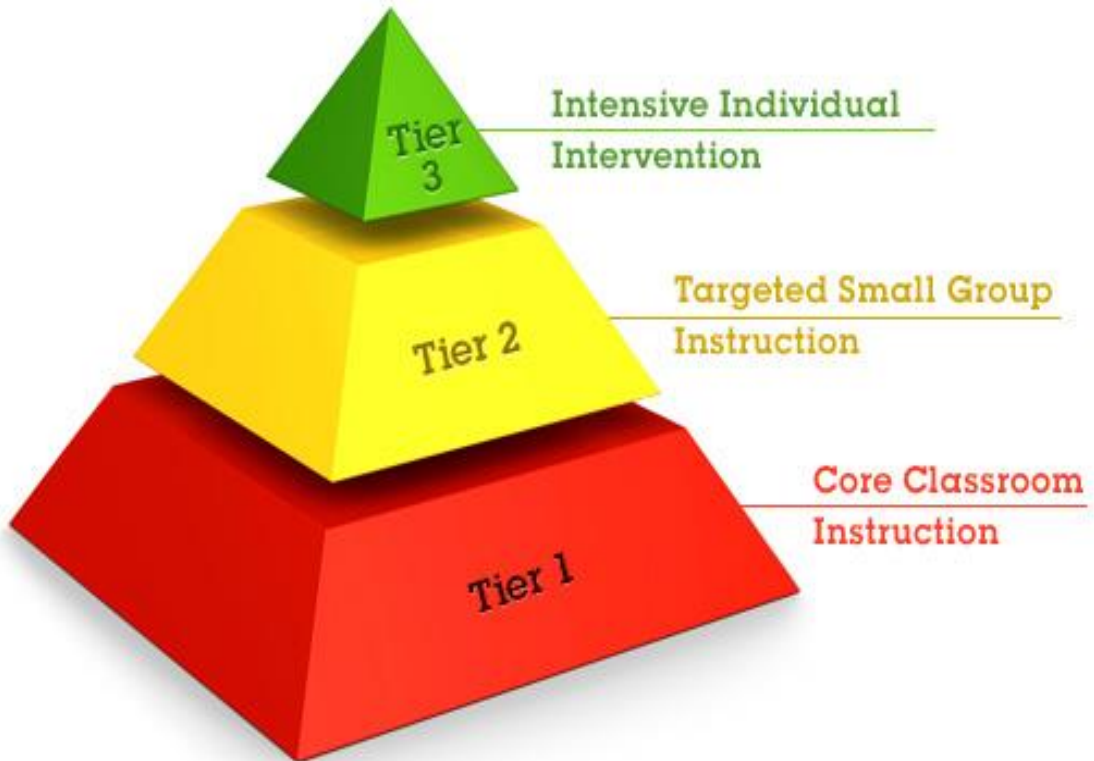
Help maintain a school Ensure the school is updated with accurate contact information including, but not limited to, home address, telephone number(s), and e-mail address. free of weapons, illegal drugs, controlled substances and alcohol.

Attend school and receive a free and appropriate public education with equitable resources

Demonstrate pride in self and academic future by dressing appropriately for school and school functions.

Students Rise. We All Rise.

Positive Behaviors Interventions & Supports (PBIS)



RTI (Response To Intervention)
3 Tiers of Support



Students Rise. We All Rise.

Dress Code 2020-2021

Slacks and Pants:

- Color: All slacks and pants must be a solid color: Khaki, navy blue, or black
- Style: Slacks and pants can be pleated or flat front, full length and appropriately fastened at the waist
- Belts: Pants should be worn at waistline and/or accompanied with a belt to hold them in place.

Tops:

- Shirts and blouses must have buttoned down or straight collars; turtlenecks and polo styles are permitted; All tops must be worn tucked inside pants, slacks, shorts or skirts
- Color: All students shall wear approved colors required by the school
- Style: Long and short sleeves with a collar required. School approved turtlenecks and polo styles permitted
- Logos: Manufacturer trademarks, if any, must be one inch or less. DPSCD school logos are permitted and are not limited in size

Skirts, Shorts, and Jumpers/Skorts:

- Color: Khaki, navy blue, or black, in a solid, single color
- Style: Shorts and Skorts must have a 9-inch inseam and/or be no more than 2 inches above the knee.

Jackets, Cardigans, and Sweaters:

- Color: Should match an accepted uniform color
- Style: All must be worn over a collared shirt, turtleneck or polo style top
- Hooded Jacket: Hoods are not be worn (on the head) during the school day.

Footwear:

- Athletic shoes, laced shoes and/or other shoe boots, loafers, dress shoes, or other closed toed/closed heel shoes. Students are also prohibited from wearing steel-toed boots/shoes to school

Personal Protective Equipment (PPE):

- Mask or appropriate face covering while participating in class or any school related event. Masks may be optional during athletic practices when social distancing is possible



*Reflect
Your
Respect*

COVID-19 Recommendations & Expectations

DESCRIPTION

Detroit Public Schools Community District remains committed to mitigating the risks of COVID-19 and maintaining a safe school community and online environment for learning. As DPSCD begins the phase of returning to school, the health and safety of students and staff is the top priority. The Student Code of Conduct supports this goal by identifying shared expectations that keep our community safe and healthy.

To provide a safe learning environment, all students and staff must understand and agree to comply with the following and potential additional health and safety requirements on district property. Students on campus or in a school related event off campus (on and off campus), are expected to abide by all federal, state, local, and DPSCD codes and guidelines to help mitigate the spread of COVID-19. **Failure to do so will result in the use of appropriate Interventions and Supports as outlined in the Student Code of Conduct.**



COVID-19 Recommendations & Expectations



Maintain
social
distancing

Restrictions on Social Gatherings	In order to decrease the number of people who could become infected with COVID-19, there are limits on the number of people who may congregate in one place. All students should adhere to the district guidelines based on their location on district property by limiting the number of people who may gather together.
Physical Distancing Guidelines	The Centers for Disease Control and Prevention (CDC) recommends limiting close contact with other individuals. Specifically, you should maintain a 6-foot distance from others, in both indoor and outdoor spaces, to the greatest extent possible. It is important that you are respectful of the space of others and maintain the proper distance. Students are expected to follow the identified travel patterns in all district buildings/locations.

COVID-19 Recommendations & Expectations

<p>Protective Face Mask/ Coverings</p> 	<p>The CDC has advised that wearing a face covering can slow the spread of COVID-19. All students are expected to wear a face covering while they are indoors (with the exception eating). Students are also expected to wear a face covering when outdoors if they cannot engage in appropriate physical distancing. Students are expected to follow the direction of school staff regarding the use of face coverings when on district property and participating in district activities. Anyone using a personal, reusable mask should follow CDC guidelines for maintaining and sanitizing as necessary.</p> <p>The District will take into consideration the age of the student and the medical history of a student when requiring face masks/ coverings. Wearing a face covering may be challenging for younger students and can potentially be harmful to students with underlying medical conditions. Face coverings should be worn by students as feasible and are most essential in times when students are indoors or when physical distancing is not possible.</p>
<p>Respect for Health</p> 	<p>DPSCD students show positive regard and respect for each other and for the community. Behavior that violates this value includes but is not limited to: Intentional or reckless behavior causing harm; threat thereof or endangering the health or safety of any person (self or others); endangering the well-being of individual(s), including but not limited to attempting or threatening to cough/sneeze, false report of illness, removing your own or another's face mask, or refusing to comply with health guidelines. Failure to show positive regard and respect for the health and safety of others will result in the use of appropriate Interventions and Supports as outlined in the Student Code of Conduct.</p>

K12 Online Learning Expectations

K12 Online Learning Expectations

Online Learners are...	Entering Class	Teacher-led Whole Group Instruction	One-on-One Instruction	Small-Group Activities
Respectful	<ul style="list-style-type: none"> • Video on based on teacher guidance • Audio off 	<ul style="list-style-type: none"> • Ask in chat if you need help • Use kind words and faces 	<ul style="list-style-type: none"> • Video on based on teacher guidance • Audio on • Listen attentively • Answer questions out loud on cue 	<ul style="list-style-type: none"> • Video on based on teacher guidance • Audio on • One speaker at a time: wait or use chat to respond when others are talking • Respect others' cultures, opinions, and viewpoints
Responsible	<ul style="list-style-type: none"> • Be on time and ready to learn • Start class charged or plugged in • Have materials ready 	<ul style="list-style-type: none"> • Ask questions (voice or chat) when you have them • Be present – avoid multitasking 	<ul style="list-style-type: none"> • Ask questions out loud when you have them • Try your best • Be present – avoid multitasking 	<ul style="list-style-type: none"> • Encourage each other to stay on topic • Complete the work together • Use "Ask for Help" button if you have questions • Be present – avoid multitasking
Safe	<ul style="list-style-type: none"> • Choose a distraction free space • Use equipment as intended • Use kind words and faces 	<ul style="list-style-type: none"> • Ask in chat if you need help • Use kind words and faces 	<ul style="list-style-type: none"> • Use kind words and faces 	<ul style="list-style-type: none"> • Use "stop-leave-talk" when you hear disrespect • Encourage others to participate • Use kind words and faces



Students are responsible for their behavior during online learning in accordance with federal and state law, District policies and rules, as well as, Superintendent's administrative guidance and the Code of Conduct. Always use District technology in a way that shows consideration and respect.

Online Classroom Etiquettes & Expectations

- **Mute your mic** while the teacher or a classmate is speaking.
- Type **questions in the chat** so that you do not interrupt class.
- Use the **chat for questions about class only**.
- Always use **appropriate language**. Always use **kind, thoughtful words**.
- **Wear appropriate attire** similar to what you would wear to school.
- **Refrain from eating/drinking** while class is in session.
- Do your best to **pay attention and participate**.
- **Leave the meeting** when class is over.
- **Ask permission** before sharing class content.
- Only post **classroom appropriate** materials.
- **Always be safe, responsible, and respectful**.

Classification of Infractions (Point System)

To further support disciplinary expectations, level infractions will be provided a point value. **Once students reach sixteen (16) or more points, in any combination**, during one school year, students may be referred to the Hearing Officer for possible placement in an alternative school or program.

Infractions of the Student Code of Conduct are grouped into four levels:

Level 1: Minor (1 point)

Level 2: Moderate (2 points)

Level 3: Major (3 points)

Level 4: Severe (Referral to Hearing Officer)



Level 1 Infractions

To ensure students are provided opportunities to function in an environment conducive to learning.

Level 1 INFRACTIONS:

- FAILURE TO FOLLOW INSTRUCTIONS/INSUBORDINATION
- REFUSAL TO IDENTIFY SELF
- USE OF ELECTRONIC COMMUNICATION DEVICES (“ECD”) SMART PHONES, CELLULAR PHONES OR OTHER DEVICES THAT CAUSE DISRUPTION WHILE ON SCHOOL PROPERTY
- IMPROPER OR UNAUTHORIZED USE OF SCHOOL MATERIALS/EQUIPMENT
- CHEATING/ACADEMIC MISCONDUCT
- INAPPROPRIATE DISPLAYS OF AFFECTION
- LOITERING/TRESPASSING
- SKIPPING/CUTTING CLASS (New to the Code.)
- INAPPROPRIATE DRESS/GROOMING
- ROUGH PLAY (New to the Code.)

Level 2 Infractions



Level 2
INFRACTIONS:

- PROFANITY/OBSCENITY TOWARD STAFF
- POSSESSION OF DANGEROUS OBJECT(S)
- THEFT OR RECEIPT OF STOLEN PROPERTY
- EXTORTION, COERCION OR BLACKMAIL
- DEFACEMENT OF PROPERTY
- *INTERFERENCE WITH OR INTIMIDATION OF SCHOOL PERSONNEL
- INTERFERENCE WITH THE MOVEMENT OF PUPILS IN AND OUT OF SCHOOLS, BETWEEN SCHOOLS, OR BETWEEN HOME AND AN ASSIGNED SCHOOL
- HARASSMENT STUDENT – COVERS VERBIAGE OF PREVIOUS B01 (Updated)
- GAMBLING
- VERBAL ABUSE
- FORGERY/GIVING FALSE INFORMATION OR IDENTIFICATION
- ABUSE OF TECHNOLOGY
- *FIGHTING – MUTUAL COMBAT, MUTUAL ALTERCATION
- *INITIATING A FIGHT
- *RESPONSE TO A PHYSICAL ATTACK
- SEXUAL HARRASSMENT (I)
- FAILURE TO SERVE PREVIOUSLY ASSIGNED DISCIPLINE
- LEAVING SCHOOL PREMISES WITHOUT PERMISSION
- HAZING



OBSCENITY
TOWARD
STUDENTS

**Updated: B14 Fighting Mutual Combat, Mutual Altercation
B15 Initiating A Fight**



1st Referral:

Parent Conference, Restorative Practice: Circle and 1-2 days ISS

2nd Referral:

Parent Conference, Restorative Practice: Circle, Restorative Behavior Agreement, 1-day OSS and 2 days ISS

3rd Referral:

Restorative Practice: Formal conference (Circle for B15), 2 days OSS and 1-day ISS, and Referral to Hearing Officer

Level 3 Infractions

Level 3 INFRACTIONS:

- POSSESSION OF A KNIFE
- DESTRUCTION OF PROPERTY
- THEFT OR RECEIPT OF STOLEN PROPERTY
- SEXUAL MISCONDUCT
- SEXTING
- FORGERY/FRAUD
- BULLYING/CYBERBULLYING
- POSSESSION OF PROHIBITED SUBSTANCE OR OBJECTS
- USE OR POSSESSION OF ILLEGAL OR CONTROLLED SUBSTANCES
- GANG ACTIVITY
- ADMITTANCE OF UNAUTHORIZED INDIVIDUALS INTO SCHOOL BUILDINGS
- FALSE ALARM
- OTHER ILLEGAL CONDUCT
- *SEXUAL HARASSMENT LEVEL II (Updated)
- VERBAL ASSAULT
- OTHER EGREGIOUS CONDUCT AS DETERMINED BY DISTRICT LEVEL STAFF

Updated Level C Infractions

Level C Infraction	Update
C07 Bullying/Cyberbullying	<i>Victims of bullying will be automatically referred for counseling and the parent will be notified.</i>
C14 Sexual Harassment Level (II)	<ul style="list-style-type: none">•1ST Referral: Report to Title IX Coordinator – DO NOT PROCEED WITH ANY OTHER STEPS UNTIL DIRECTED BY THE OFFICE OF EQUITY, ADVOCACY and CIVIL RIGHTS•2nd Referral: Report to Title IX Coordinator – DO NOT PROCEED WITH ANY OTHER STEPS UNTIL DIRECTED BY THE OFFICE OF EQUITY, ADVOCACY and CIVIL RIGHTS

Level 4 INFRACTIONS:

- POSSESSION OF A FIREARM
- POSSESSION OF OTHER DANGEROUS WEAPONS
- USE OF A WEAPON OR AN OBJECT AS A WEAPON
- PHYSICAL ASSAULT TO AN EMPLOYEE, VOLUNTEER OR CONTRACTOR
- PHYSICAL ASSAULT TO ANOTHER STUDENT CAUSING GREAT BODILY HARM
- BOMB OR SIMILAR THREATS
- ARSON
- SALE/DISTRIBUTION OF CONTROLLED SUBSTANCES OR ILLEGAL MATERIALS
- CRIMINAL SEXUAL CONDUCT

Attendance Expectations

- ✓ Students are expected to attend all classes each day.
- ✓ Students are expected to be on time for each class during the school day.
- ✓ Students are to remain in school the entire school day.
- ✓ Students are expected to maintain a ninety-six percent (96%) attendance rate.
- ✓ The District complies with the Michigan Compulsory School Law, which states that all students between the ages of six (6) and eighteen (18) are to attend school during the entire school year.



Poor attendance may lead to failure



EVERY DAY COUNTS: "On Time, Every Day, All Day"

Chronic Absenteeism

Chronic absenteeism and habitual truancy are important predictors of school performance, including high school graduation. Average daily attendance rates often mask the number of students who are chronically absent - which equates to missing at least ten percent of the school year or approximately eighteen (18) school days for any reason.

Levels of Chronic Absenteeism:

- **Satisfactory Attendance** Students who miss 5% or less of total school days are considered to have.
- **At Risk of Becoming Chronically Absent (At Risk)** Students who miss 5%-10% of school days are at risk.
- **Chronically Absent** Students who miss 10%-20% of total school days.
- **Severely Chronically Absent** Students who miss 20% or more of total school days.



Once a student falls behind,
they rarely catch up!

Resulting in a student dropping
out or not graduating!

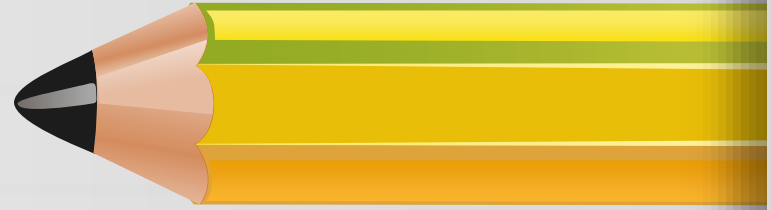
Every minute in school
matters!

Two missed days a month adds
up to being a half year behind!

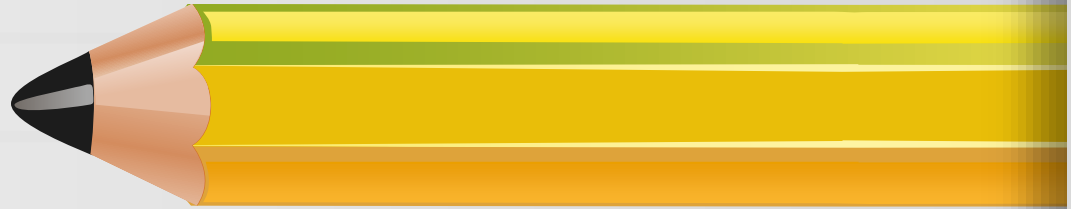
Students Rise. We All Rise.

DID YOU KNOW?

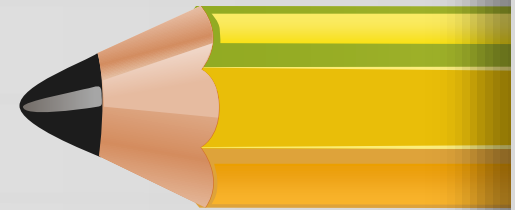
More than ten percent of kindergarten and first graders with excessive absences have a 81% chance of reading below grade level in third grade.



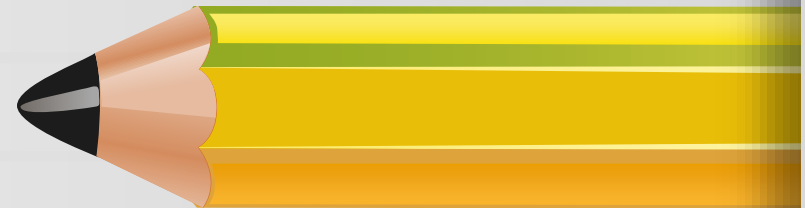
The leading indicator that a student will drop out of school is the 6th grade is their attendance.



Between 8th and 12th grade students with excessive absences is 7.4 times more likely to drop out of school.



By college, a student with excessive absences will have an 11% chance of receiving any degree.



Terms to Know

Chronic Absence

Missing 2 days each month, totaling 18 days, equals 10% of the school year.



Truancy

Staying away from school for no good reason.



Suspension

Temporary, complete exclusion from school and activities. Student is banned from being on school property.



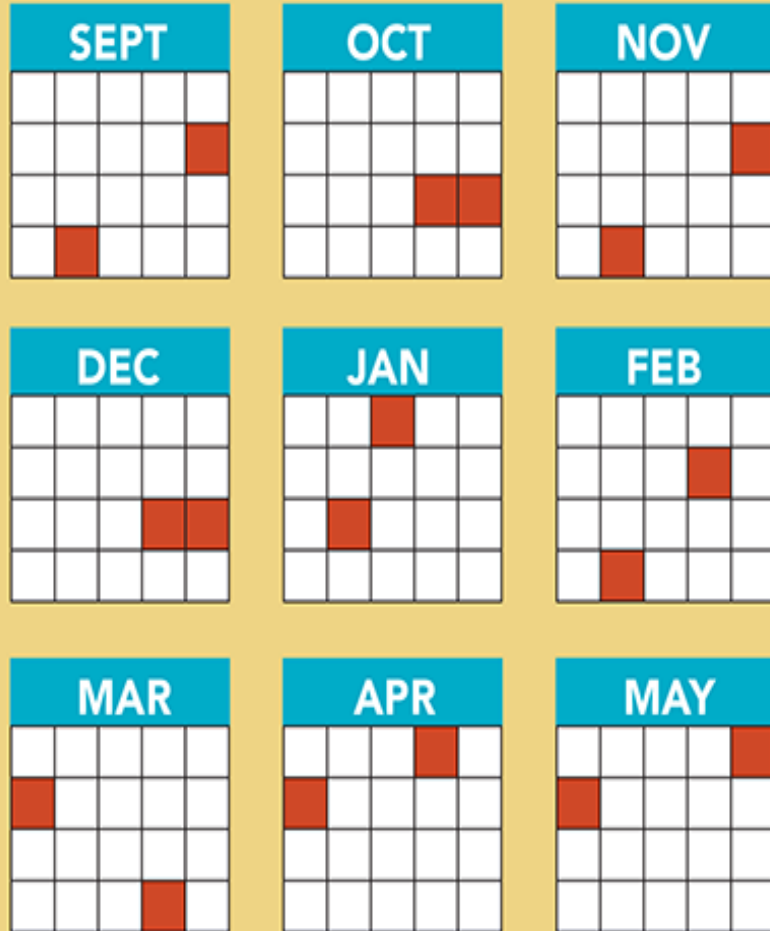
In-School Suspension

Students are removed from normal classroom environment for a day (s) working on their regular class work in a special classroom setting.



TERMS TO KNOW

Every Day Counts: 180 Days



2 ABSENCES
PER MONTH

x 9 MONTHS
OF SCHOOL

EQUALS:



LESS LIKELY TO GRADUATE
FROM HIGH SCHOOL

ABSENCES ADD UP

Students Rise. We All Rise.

Levels to Attendance

Good Attendance 9 or Fewer Absences

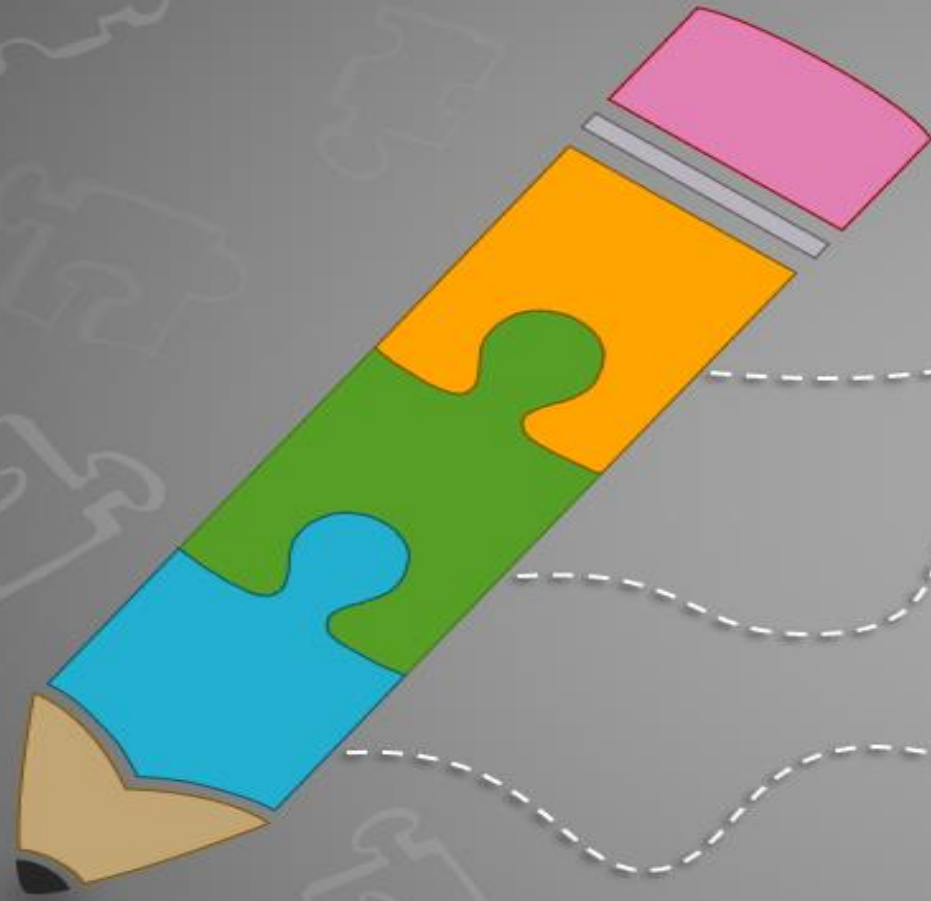
- ✓ Students with good attendance generally achieve higher grades and enjoy school more.

Warning (10 TO 17 DAYS)

- ✓ Students who are absent an average of 15 days a year miss a year's worth of school before their senior year..

CHRONIC (18 DAYS OR MORE)

- ✓ Excused and unexcused absences represent lost time in the classroom and lost opportunities to learn.



Make the Right Choice

Substance Abuse

Criminal Activity

Gang Involvement

Dropping Out

**DON'T LET YOUR
ABSENCES MAKE
YOU A RISK FOR:**

Students Rise. We All Rise.



On Time Everyday!

Students who arrive later than the start of school or after the start of class without an excuse/pass are considered tardy



Tardiness

Excessive tardiness disrupts the learning process and negatively impacts the students academic achievement

Students Rise. We All Rise.

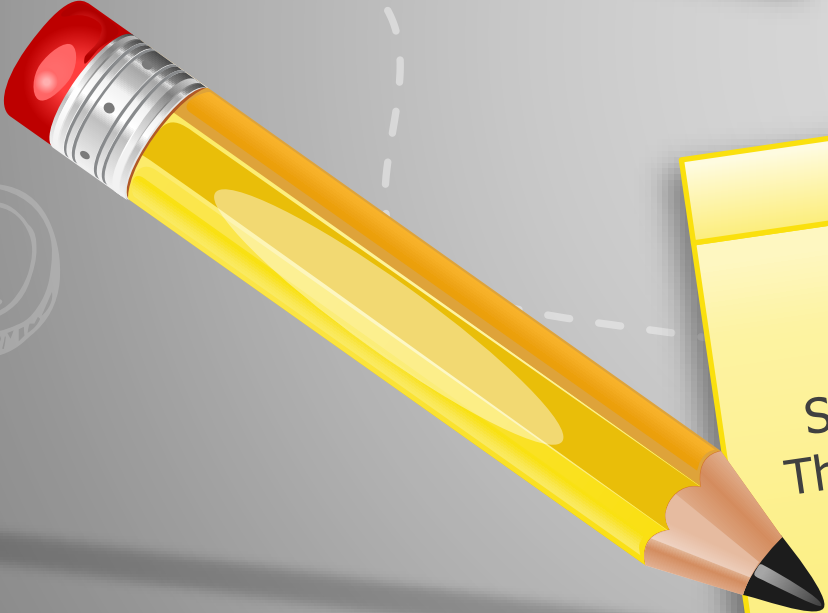
Attendance Expectations

Attend ALL Classes

Be On Time...
To ALL Classes

Stay in School
The ENTIRE Day

Maintain 96%
Attendance Rate





What Are Excused Absences ?

Religious
Holidays

Severed weather
excused by school
district/parent
for students that
do not have bus
transportation

Court
appointments due
to custody issues
or subpoenaed as
witness

What Are Excused Absences ?



What Are **Unexcused** Absences ?

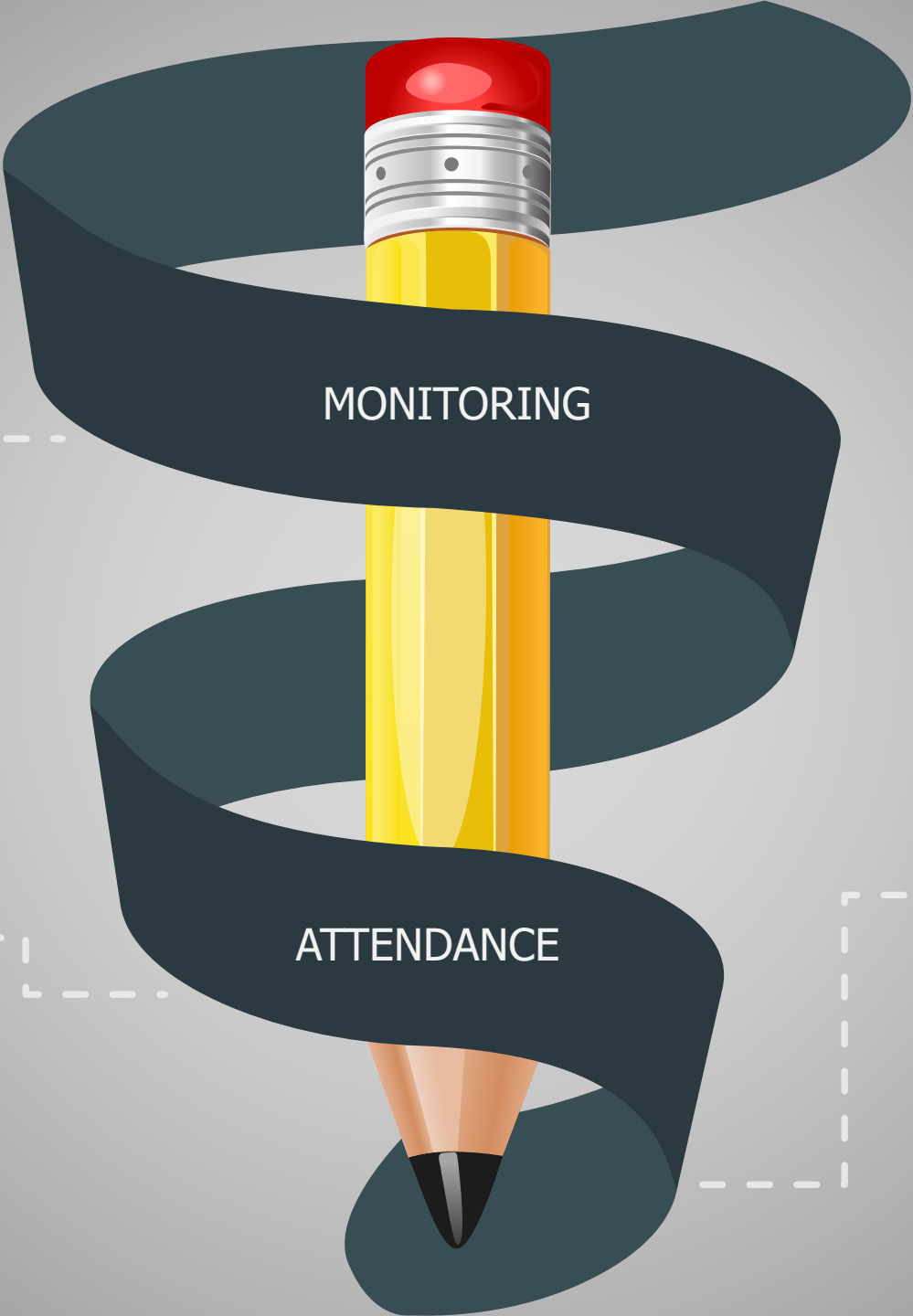


What Are **Unexcused** Absences ?



7-8 Days
Attendance agent intervention, home visit, daily check-in monitoring, meeting with parent

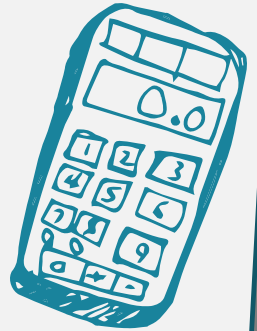
6 Days
Attendance agent intervention, home visit, daily check-in monitoring, meeting with parent



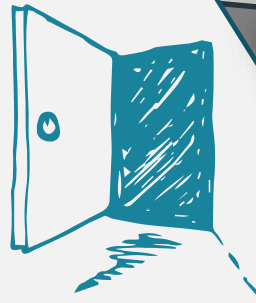
9 Days
Intervention by attendance agent: Attendance Intervention Plan developed and implemented

1-5 Days
Teacher will contact parent





*Be Here...
All Year*



*Attend School
Start to Finish*



On Time, Every Day, All Day, All Year

I'M IN 180



I'M IN 180



I'M IN 180





EXPECT RESPECT



Students Rise. We All Rise.